

Administering your EpiPen® IN 2 SIMPLE STEPS



1

Form a fist around the EpiPen® and **PULL** off the blue safety release



2

Hold leg firmly. PUSH the orange end firmly into the outer mid-thigh until it 'clicks' and **hold for 3 seconds**

After administration of EpiPen® Auto-Injector always seek medical attention – **call 111**

Adrenaline, the active ingredient in EpiPen® Auto-Injector, is the **ONLY** first-line treatment for anaphylaxis. Antihistamines are commonly used to treat itching and hives, but do not treat the life-threatening symptoms of anaphylaxis.



For additional information about anaphylaxis and living with severe allergies, visit:



anaphylaxis101.co.nz

EpiPen® is used for the emergency treatment of anaphylaxis (acute severe allergic reactions) due to insect stings or bites, foods, medications or other allergens. EpiPen® is an unfunded medicine. Patients are required to pay the full cost. EpiPen® (Adrenaline 300 µg/0.3ml) and EpiPen Jr® (Adrenaline 150 µg/0.3ml) are Restricted Medicines. Your doctor or pharmacist's advice is required. Always read the label carefully and use strictly as directed. Check carefully later for possible signs of infection at the injection site and seek medical advice immediately if you have concerns. Full Consumer Medicine Information (CMI) is available from Mylan New Zealand Ltd or on the Medsafe website www.medsafe.govt.nz. EpiPen® is a registered trademark of Mylan Inc. Mylan NZ Ltd., Auckland. TAPS NA9085.

A guide for people AT RISK OF ANAPHYLAXIS



LIFE HAPPENS Be Prepared.®

BEING PREPARED MEANS
HAVING A PLAN TO:

- Avoid known allergens
- Know what symptoms to watch for
- Use an EpiPen® Auto-Injector if a life-threatening (severe) allergic reaction occurs
- Get emergency help right away



What is ANAPHYLAXIS?

Anaphylaxis (an-a-fi-lax-is) is the medical term for a life-threatening allergic reaction that can occur within minutes after your immune system mistakenly overreacts to certain allergens.

What causes ANAPHYLAXIS?

Anaphylaxis can be triggered by a number of allergens including:



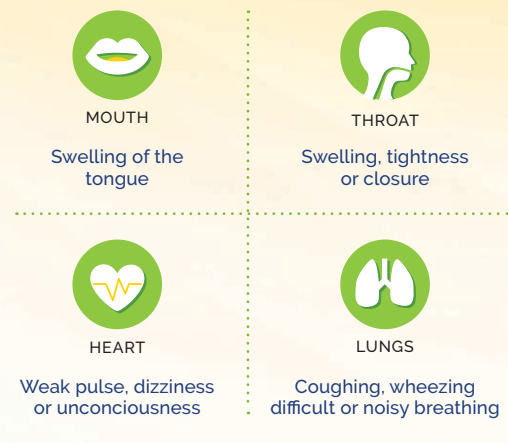
What should YOU BE AWARE OF?

If you have food allergies, certain other conditions may increase your risk of experiencing a severe anaphylactic reaction:

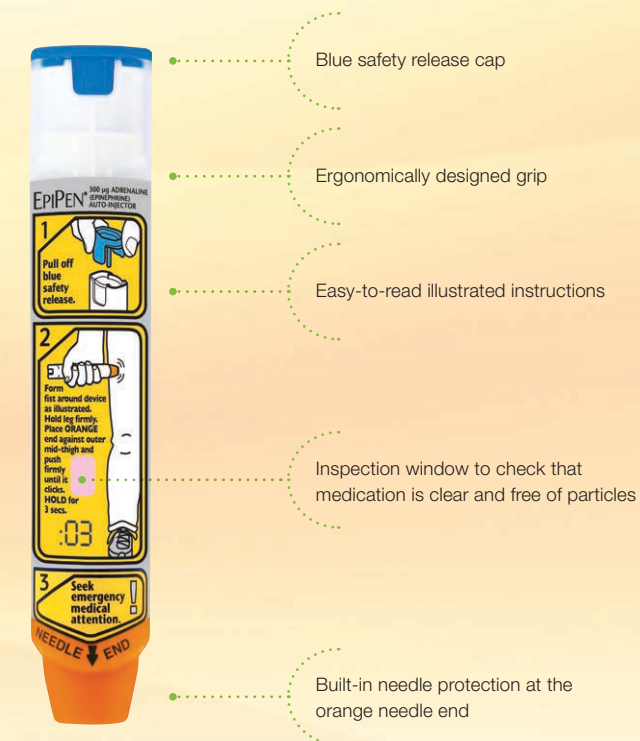


What symptoms should YOU LOOK FOR?

Its important to know what to look for, especially when symptoms could be life-threatening:



Key features of EPIPEN® AUTO-INJECTOR



EPIPEN® COMES IN A ROBUST, FLIP-TOP CARRY CASE

EpiPen® comes safely housed in a convenient, flip-top carrier case, ensuring full protection and portability. **Storage:** Store your EpiPen® below 25°C. Do not refridgerate.



REGISTER WITH EPICLUB® TO RECEIVE YOUR FREE EPIPEN® TRAINING DEVICE AND EDUCATIONAL KIT

EpiClub® is an online educational resource where you can access additional information about anaphylaxis and EpiPen®. It also provides a FREE reminder service to help remind you when your EpiPen® is about to expire and needs to be replaced.

Always be aware of your expiry date

Your EpiPen® Auto-Injector contains the life-saving medication adrenaline and its activity cannot be guaranteed beyond the expiry date. The expiry date can be found on the side of the EpiPen® Auto-Injector.

As an EpiClub® member, you can log in the details of your EpiPen® Auto-Injector and we'll send you a friendly reminder when its due to expire.

How to Sign Up

Go to www.epiclub.co.nz to sign up online or complete the enrolment form found inside the EpiPen® pack. When you register with EpiClub® you will receive a welcome pack that includes a free EpiPen® Training Device.

How to obtain an EpiPen®

EpiPen® is a Pharmacist Only Medicine, which means you can purchase from your pharmacist or from your doctor. Ensure you are prepared with an EpiPen® in various locations – at home, at work, at school.

